

***G1E Plus Series  
40+ Port Hybrid IP  
Communication  
System***

***VoIP ISDN CTI***





The G1E Plus Hybrid IP Communication System combines the advantages of traditional telecommunications with the convergence of VoIP. This system offers a vast array of flexible features to handle your business communications needs - Today and Tomorrow !

Designed to cater for most small businesses, right out of the box, the base platform will support up to eight digital system phones configured to make the most of your productive day. For users that need mobility up to four industry standard cordless telephone sets can also be accommodated on analogue ports. There is an embedded four channel automated attendant so your customers can dial station users or departments directly. You can even record your own custom on-hold message in order to provide that professional image you are looking for !

**Flexibly connect on your own terms with a variety of outside line choices. The G1E Plus can serve as a branch office system for multi-site VoIP applications or realise the economy of VoIP trunking to traditional networks. The choice of efficient ISDN or PSTN lines is also available. Or combinations of the above can be used. Whatever your needs the G1E Plus offers a variety of ways to communicate !**

The G1E Plus base system can be expanded to a 40 port capacity. But this is not its limit - there are further expansion options available with many sophisticated features that can be incorporated :

## G1E Plus M Options :

Add an optional Processor module to the G1E Plus and all of the sophisticated features inherent in our flagship range of systems become available to you on the G1E Plus platform. The first option of note is that the G1E Plus becomes expandable to a maximum of 4 cabinets (160 ports). Some other highlights of this feature set are :

- **Hospitality / Accommodation Packages**  
Hotel Call accounting, Room Status, Hotel Voicemail \*, Emergency Services features \*, and many more.
- **IP Extensions \***  
Internet connected IP phones with the same behaviour and functions as standard digital system extensions. Support your tele-workers with system phone facilities equivalent to that of your office personnel.
- **LAN Connectivity**  
LAN connectivity and the Web browser interface of the G1E Plus M provide a host of useful features such as : easy remote support for your system; easier and more extensive user programming of extension and console phone functions; access to system Hospitality features, system ACD functions, extra CTI interfaces, and more.
- **Advanced Voicemail Features \***  
Multi-level menus to provide more options and better control of incoming calls from your customers.
- **Twinning**  
Twin your digital extension phone with your mobile phone - so wherever you are you are always in touch.

\* = Additional equipment, and cost, may be required.

## Valuable Voice Services Features enhance call handling

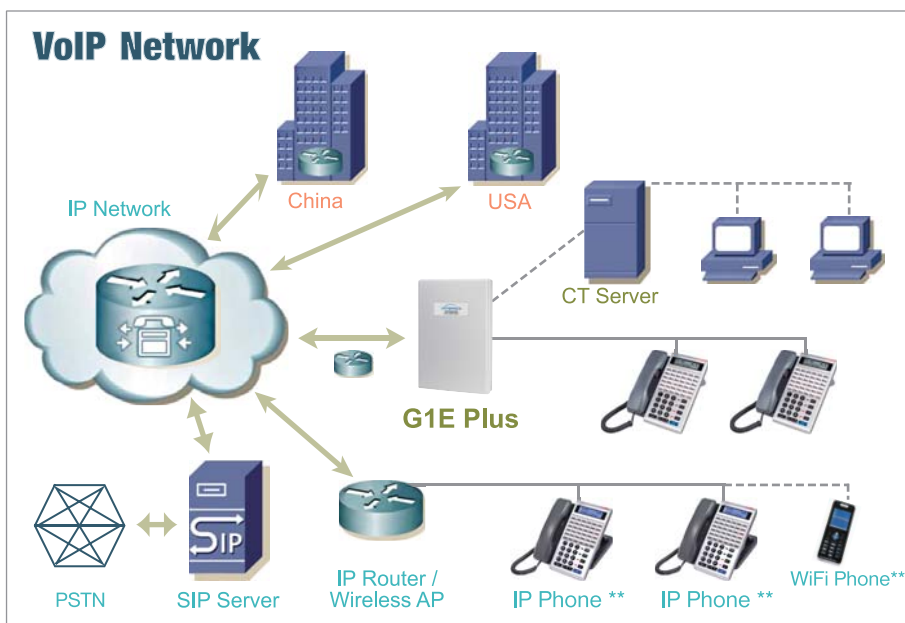
All G1E Plus systems are equipped with a standard Auto Attendant and recordable Music-on-Hold feature.

The Optional Voice Mail card will add the following valuable voice service features :

- **Auto Attendant :**  
Increases the standard 4 ports to 6 automated attendant ports to answer incoming calls simultaneously.
- **Voice Mail :**  
Every station has its dedicated voice mail box to let callers leave messages when you are busy or away from your desk.  
A Virtual Mail Box capability allows you to assign mailboxes for associates who do not have a physical phone on the system.  
Or to record and play special announcements, for product promotion for example.
- **Answering Machine Emulation :**  
Listen to a caller on loudspeaker as they leave a message in your mailbox and answer the call by just lifting the handset.
- **Conference Groups**  
Conference groups with a maximum of 8 participants. There are up to 5 groups when each group has 3 participants.

## Other standard G1E Plus feature advantages :

- **Duet Feature :**  
Discriminate between Fax and Phone calls on the same incoming line by the sound of the ring tone.
- **Dual Porting :**  
Pair a digital and an analogue extension with the same extension number and the ability to transfer between them. So you can have your desk phone and a wireless phone as well allowing you maximum mobility in your business while you stay in touch.



\*\* Note : IP Extensions require G1E+M Option plus supporting extension card.

## CTI Solution Increases Office Productivity

CTI (Computer Telephony Integration) applications employ your customer database to deliver caller information to your staff along with the call. The G1E Plus CTI interface, a CTI server, TSP (Telephony Service Provider client), Caller ID, and TAPI based CTI applications integrate to deliver your business contact's information immediately to your desktop PC when they call you. CTI can be configured in many ways to suit your work, from various styles of screen pop for incoming calls or click to dial from your database, according to the TAPI capable application you choose.

## Key System Features

- Account Code Capability
- Access Control Phone\*
- Answering Machine Emulation\*
- Automatic Answer - Intercom
- Auto Attendant with Overflow
- Auto Redial
- Busy Lamp Field
- Barge-in
- Calendar and Real Time Clock
- Call Accounting
- Call Blocking
- Call Pick-up
- Call Forward - Busy/No Answer/All calls
- Call Transfer
- Camp On
- CLI on Both External and Internal calls
- Conference
- CTI Integration\* - TAPI
- Day and Night Service
- Group Listening
- DND (Do Not Disturb)
- DISA (Direct Inward System Access)
- Distinctive Ringing
- Forced Account Code Assignment
- LCR (Least Cost Routing)
- Last Number Redial
- Macro Keys
- Music On Hold - Recordable
- On-Call Programming
- Paging/Internal and Meet Me
- Paging/External\*
- Pick-up
- Privacy Release
- Programmable Keys
- Remote Software Upgrade by Modem\*
- Remote Programming by Modem\*
- Power Supply with Charger
- Station Group
- SLT Station Caller ID Service
- SLT Industry Standard 90V Message Light Compatible
- SMDR (Station Message Detail Record)
- SMDR - Real Time Protocol for Call Limitation
- Speed Dial - System (900 Sets Max.)
- Speed Dial - Station (20 Sets Max.)
- Trunk Group
- Toll Restriction
- Virtual Mail Box\*
- Voice Mail\*
- VoIP Call - Point-to-point\*
- VoIP Call - Point-to-multi-point\*
- VoIP Call - DID Calls\*

\*: Optional equipment and cost will be required for this feature.

## G1E Plus System Cabinet Specifications & Capacities

	Maximum ports
Analog CO Line	8
ISDN BRI	6 (12 channels)
VoIP Trunk - SIP	8
Digital Key Station	24
Single Line Telephone	20
Access Control Phone	24
Auto Attendant - Basic/Optional	4 / 6
Voice Mail - optional channel	4
KSU Dimension - L x W x H (mm)	425 x 315 x 90 mm
<b>G1E+M Multi-Cabinet Options</b>	<b>Up to 4 Cabs (160 ports)</b>



Not all telephones are available in all markets. Consult your local dealer



Hybrex Partner :

### Auto Telecom Company Limited.

10F, No.3, Lane 16, Sec. 2, Sichuan Rd.,  
Banquiao City, Taipei County 220, Taiwan  
Tel: +886-2-8966-1356 Fax: +886-2-8966-5764  
Email: inquiry@hybrex.com www.hybrex.com

### Auto Telecom (Australia) Pty. Ltd.

Unit 7, 3 Gibbes Street, Chatswood, NSW 2067  
Tel: +61 2 94150100 Fax: +61 2 94176877  
Email: business@hybrex.com.au www.hybrex.com.au

### Auto Telecom New Zealand Ltd.

Unit i, 55 Druces Rd, Wirri, Manukau, Auckland, NZ.  
Tel: +64 9 260 4009 Fax: +64 9 263 7373  
Email: sales@hybrex.co.nz www.hybrex.co.nz

Design and specifications are subject to change without notice